



Laughing Matters

Using humor and AI to transform relationships between society and the unhoused.

v1.5Mini

©2024 Laughing Matters 501(c)3 All rights reserved.

*images made with AI

What if we altered the Social Contract



My Donation to Society:

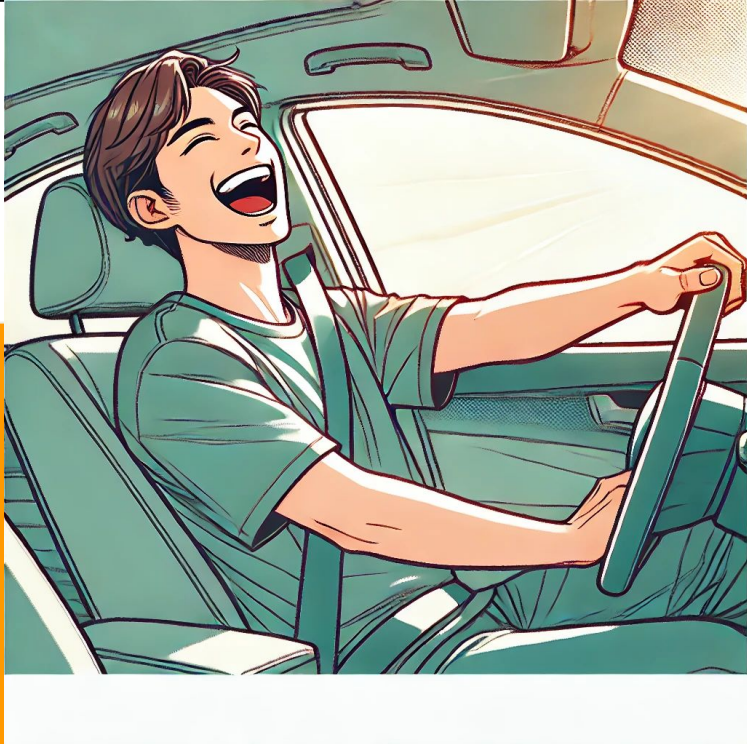
"Joke of the Day"



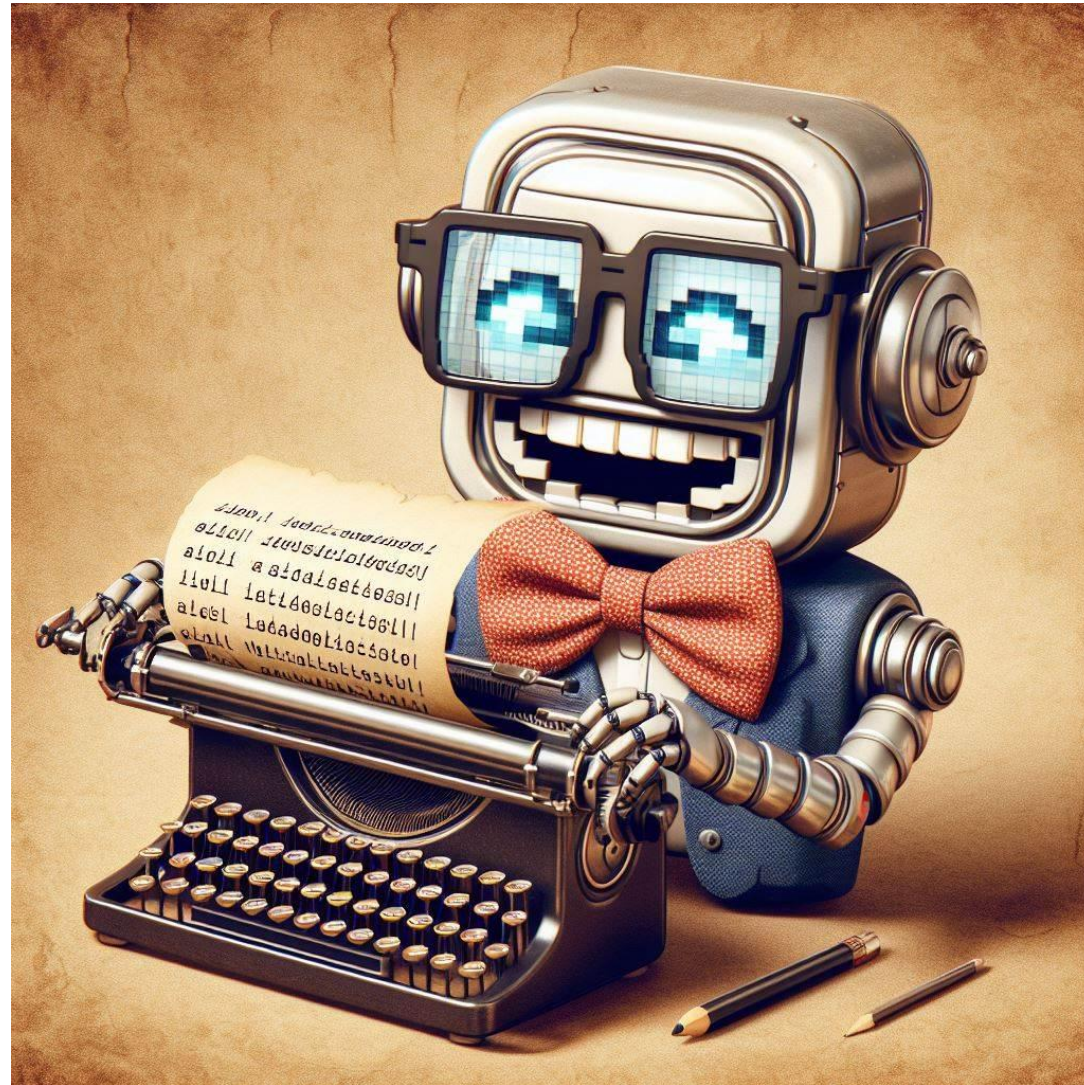
Change the Relationship



| | | |
|------------------------|---|---------------------------------|
| Receiver | ➡ | Giver |
| Stranger | ➡ | “Jim” |
| Guilt (for not giving) | ➡ | Partnership |
| Disdain | ➡ | Respect for effort and attitude |
| Daily source of “ugg” | ➡ | Daily source of joy |



Ai Joke Engine - Human Curator



- Most jokes are created by Ai
- Jim selects a joke of the day using the website
- Special edition jokes are donated by celebrity comedians



Re-Humanize

The QR Code links to Jim's profile page:



<https://www.website.com/Jim>

I'm Jim, thanks for saying hi.

I review piles of jokes every day and pick the best one for you.

[My Joke of the Day](#) 

[Make a one-time donation](#)

[Team Jim login](#)

[About Laughing Matters \(nonprofit 501\(C\)3\)](#)



My Contribution: I keep the Southbound 5 FWY and State College exit clean.

[My Story and Goals](#)

My Goals

Public:

- Winter clothing
- Pet medical visit

Personal goals shared with Support Team:

- Give Christmas gift to daughter
- Complete a Recovery Plan with my case worker

<https://www.website.com/Jim>

My Goals:

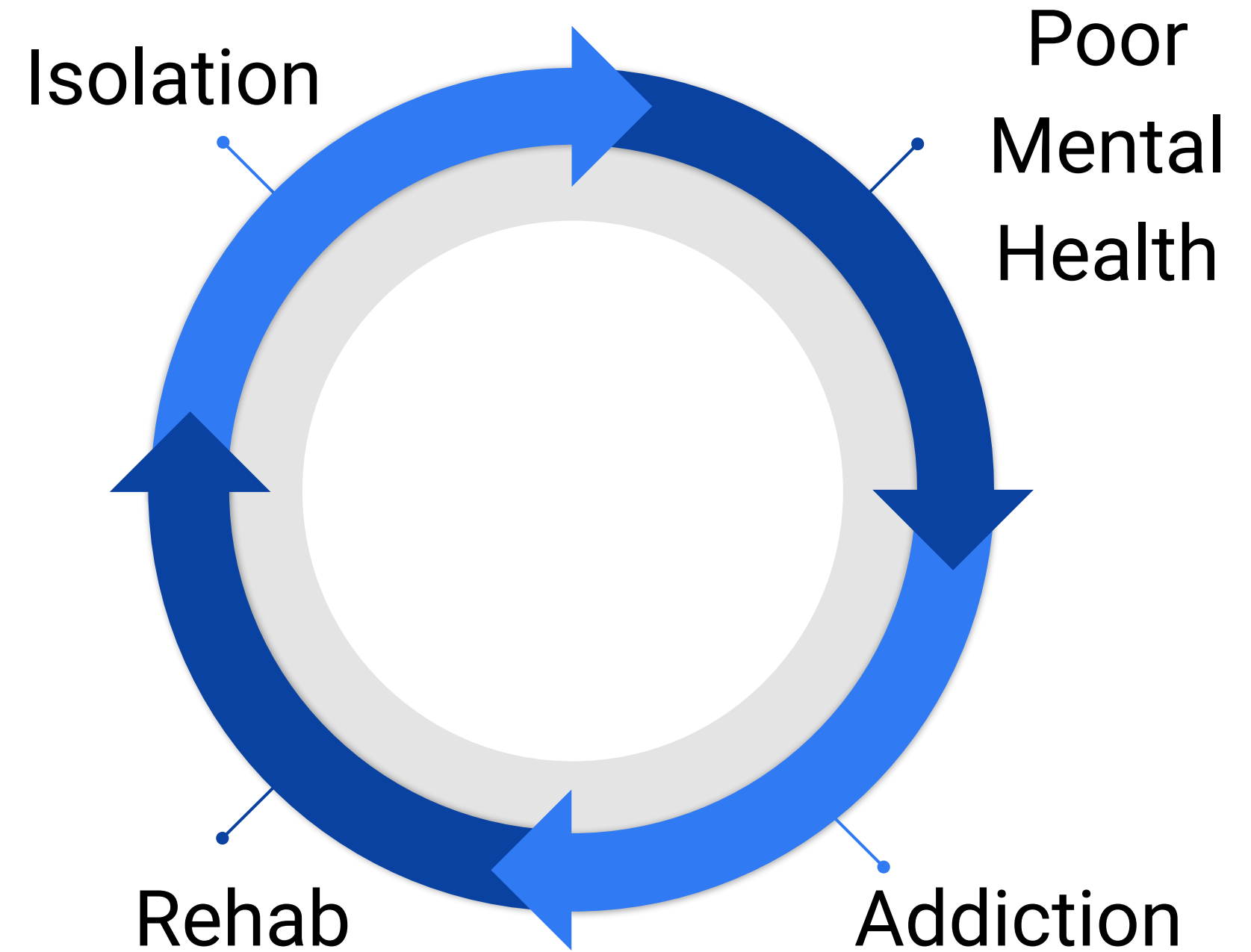
- Winter clothing
- Medical visit for my dog



The REAL Problem

Cycle of Defeat

- At moments of clarity an addict may seek help
- After rehab isolated people often relapse



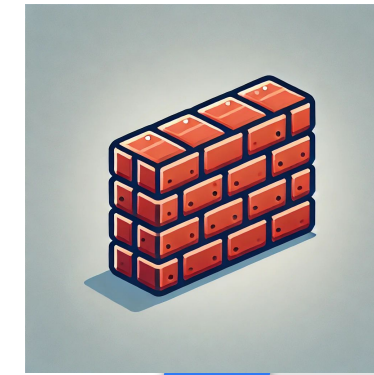
The REAL Solution

Social Ties (aka friends)

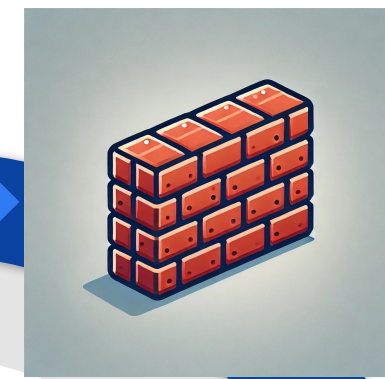
- Directly Reduce Isolation
- Directly Improve Mental Health
- Encourage Rehab
- Reduce Post-rehab Relapse



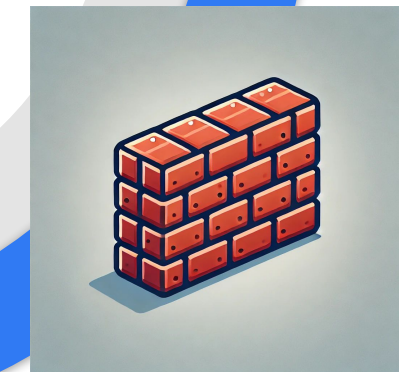
Isolation



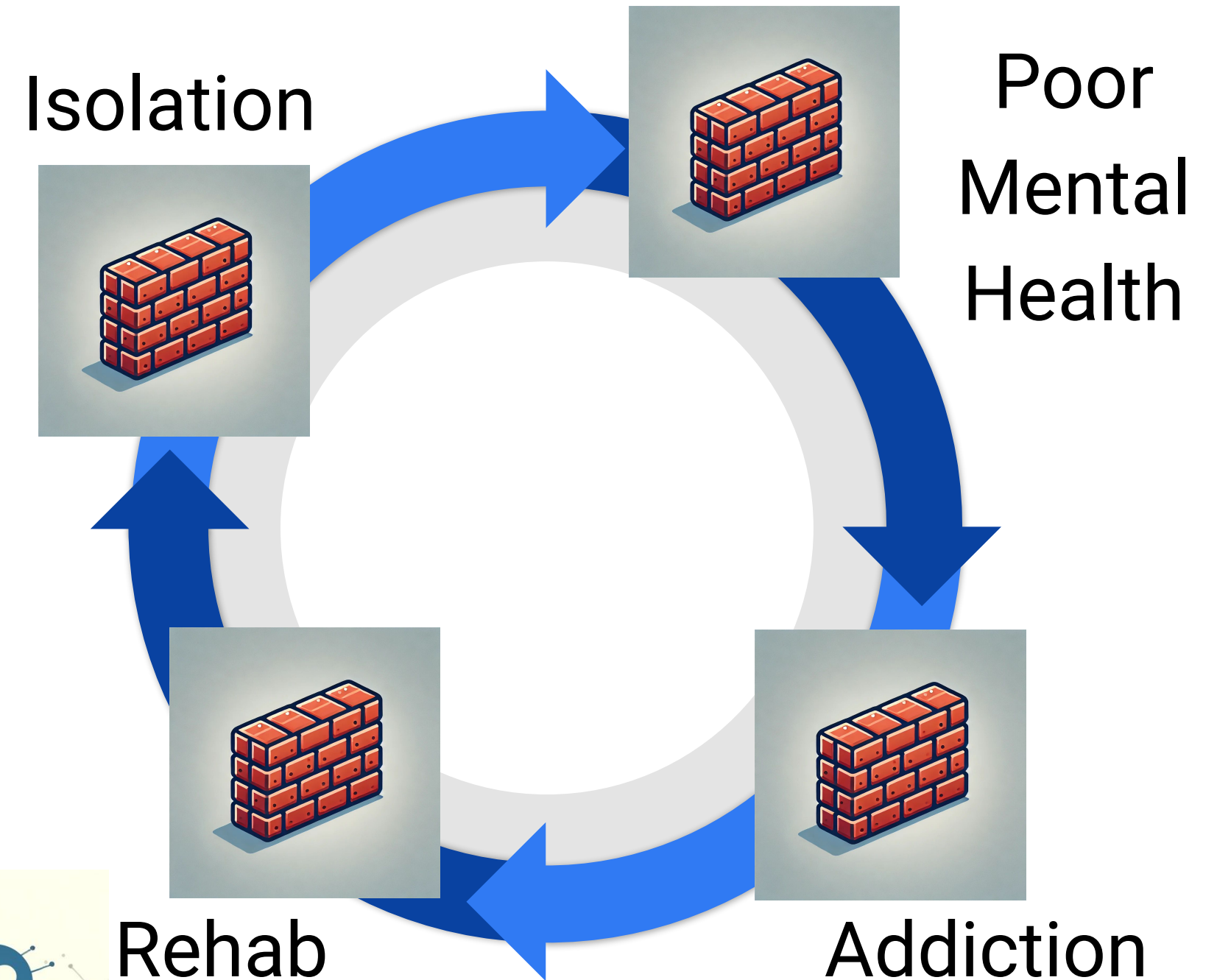
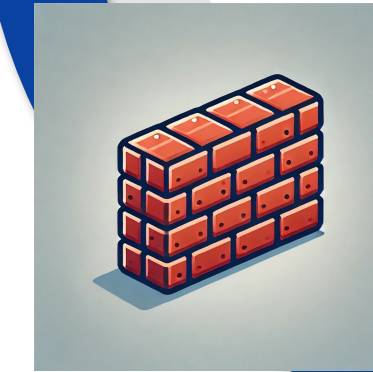
Poor
Mental
Health



Addiction



Rehab



Relationship Building



Relational Milestones

- **First Contact:** “Great joke yesterday”
- **First Name Basis:** “Hey Jim”, “Hi Bob”
- **First Chat:** “So what’s it like...”
- **Join Support Team:** Jim invites people he trusts to be in a group chat.

What if my donation is misused?

1. **Alcohol. Drugs. Scams.** Safeguards like case workers and per diem make abuse harder, but none are perfect
2. Focus on **relationship building** to facilitate recovery and life change
3. **Partnering with existing local homeless services** that know Jim and the local homeless community minimizes fraud

Partnership with Existing Homeless Services

Well known charities = Trust



Fiscal Responsibility



\$\$\$ + Addiction = Potential Problems

Per Diem: Case worker for Jim sets the max amount of funds that can be disbursed per day.

Special Purchases: Case worker transfers additional funds or vouchers keeping in mind Jim's overall health and immediate needs (like for a jacket)



The End

Thank you for your feedback

[Feedback link](#)